

# DESIGN FEATURES

## Distinctive Entry

- Metal-clad insulated entry door with bell and chime
- Large transom window with distinctive side lights to add to the extra light and beauty
- Mountain View sanctioned security locking system
- Spacious tile entry with large guest closet
- Recessed lighting

## Entry Level Powder Room

- Half bath with ample vanity cabinet
- Full mirror with 3 ft. light
- Spacious tile floor to match entry
- Large storage area in Units 5 and 6

## Living Room

- 9 ft. ceilings
- 8' by 8' glass sliding door opens to covered patio
- Wood-burning fireplace with log storage area
- Pre-wired for phone
- Pre-wired for Hearst TV cable system
- Tiled fireplace mantel and hearth with wood trim
- Dramatically track-lighted above mantel with dimmer control
- Large private covered patio and fenced private backyard

## Formal Dining Room

- Recessed lighting with dimmer control
- Pass-thru area from kitchen with lowered bifold doors
- Buffet service counter top at pass-thru from kitchen
- Open railing for unobstructed view
- Large arched windows in Units 1, 5, 6 and 10

## Kitchen and Breakfast Nook

- Contemporary Design '89 for maximum convenience and comfort
- Built-in microwave and range hood
- Complete with dishwasher and disposal
- Double stainless sink
- Full built-in pantry
- Elegant tiled floor
- Large breakfast nook with large venting windows for cross ventilation
- Temperature controlled faucet
- Free-standing range
- Extensive European-style cabinetwork
- Double track and recessed lighting on dimmer control
- Pre-wired for Hearst TV cable system
- Pre-wired for phone
- Built-in desk area
- Recipe nook area
- Dramatic under-cabinet lighting

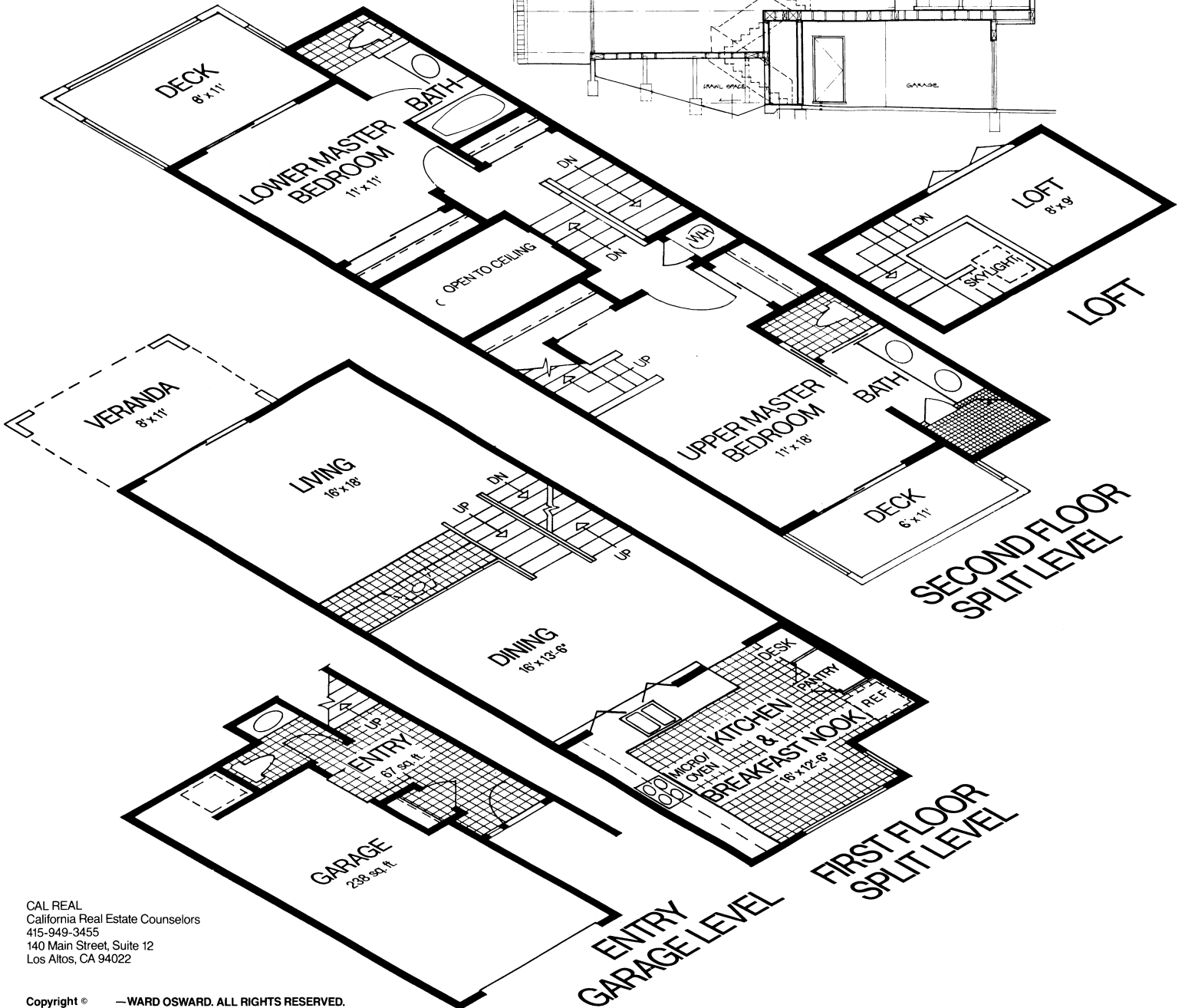
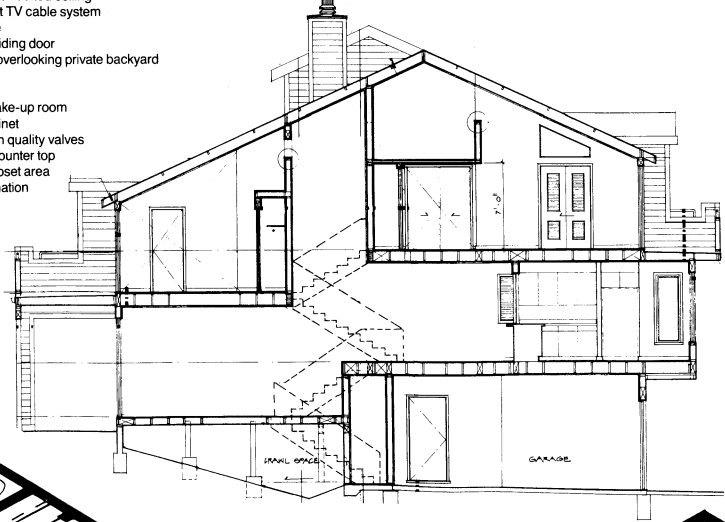
## #1 Master Bedroom

- Large hall linen closet adjacent to bedroom
- Textured and painted vaulted ceiling
- Pre-wired for Hearst TV cable system
- Pre-wired for phone
- 6' insulated glass sliding door
- Large private deck overlooking private backyard
- Full width mirrors
- Large closet space
- Private bath and make-up room
- European style cabinet
- Single sink with high quality valves
- Cabinet matching counter top
- Tile floor in water closet area
- Tub/shower combination

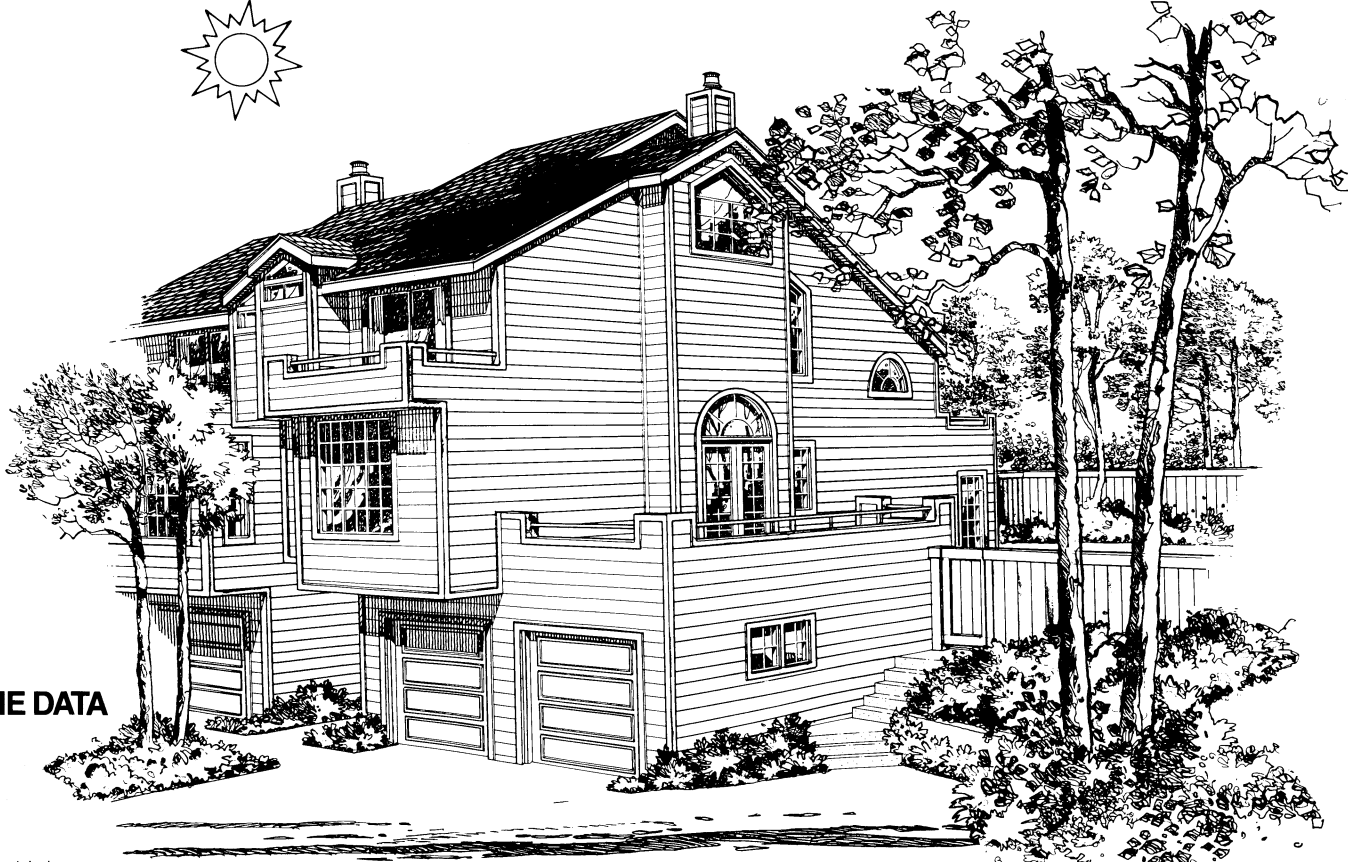
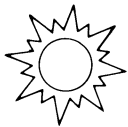
- Dormer covered bath with vented window for fresh air
- Heat/light combination
- Built-in medicine cabinet

## Master Bedroom Suite with Mezzanine Area

- Textured and painted vaulted ceiling
- Pre-wired for Hearst TV cable system
- Pre-wired for phone
- Two clothes closet areas
- 12 paneled pocket door to vanity
- European style cabinet
- Double sinks with high quality valves
- Tiled floor in water closet area
- Large shower area 54" wide by 48" deep
- Dormer covered bath with vented window for fresh air
- Heat/light combination
- 6' insulated glass sliding door with private deck
- Full width mirrors
- Private loft with pre-wired phone and Hearst TV cable system
- Skylights in Units 2, 3, 4, 5, 6, 7, 8 and 9
- Large end windows to match vaulted ceilings in Units 1, 5, F and 10



CAL REAL  
California Real Estate Counselors  
415-949-3455  
140 Main Street, Suite 12  
Los Altos, CA 94022



## TOWNEHOME DATA

### Insulation

- R-13 insulation in walls
- R-30 insulation in roof area

### Common Area

- Fully landscaped
- Mounded and planted area
- Extensive flowering annuals and shrubs
- Tot lot area
- Concrete drive between buildings with redwood strips
- Easy access from attached garages
- Weyerhaeuser hardboard siding factory primed

### Radiant Heat

- Most advanced technology by Thermofilm
- Quiet, efficient and clean system
- Separate control for each room

### Garage

- 4 panel roll-up door
- Automatic garage door opener
- Utility and storage area in each attached garage
- 2-car attached garage in Units 5 and 6

### Kiosk Area

- Meeting and relaxation area
- Mail center

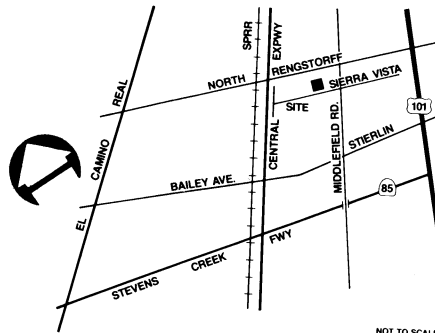
### Central Vacuum System

- Units 5, 6, 7, 8, 9 and 10
- Quiet and efficient

### Neighborhood

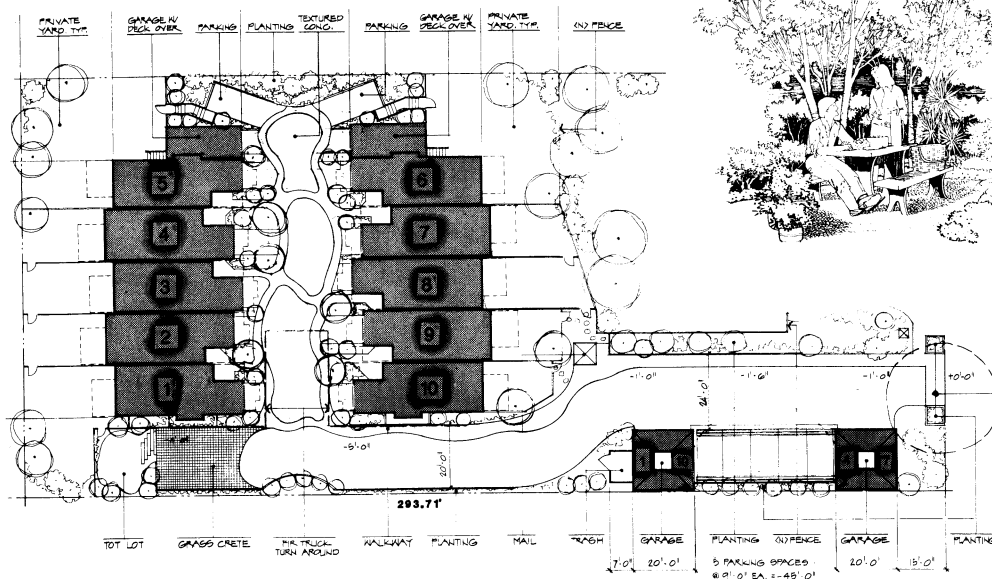
- Quiet, charming, tree-shaded, close to work, shopping, dining, educational and recreational areas
- Minutes from the Southern Pacific train station
- Minutes from several major recreational parks including Mt. View's newest Shoreline Park featuring an outdoor amphitheater, wind surfing, golf, nature preserve, walkways, picnic areas, cycling and jogging trails and much more.

Plans, specifications and prices subject to change without notice.



## DIRECTIONS:

Take 101 to Mountain View's Stierlin exit. Go West on Stierlin to Middlefield Rd. Turn right on Middlefield to Sierra Vista. Turn left on Sierra Vista and go 1½ blks, to 450 Sierra Vista's DESIGN '89 TOWNEHOMES.



### UNITS 1 and 10

	Approximate Square Footage
Habitable area including laundry area	1710
Garage Area (1 car)	213
Open balcony area	172
Covered patio area	103
<b>Total Area</b>	<b>2198</b>

### UNITS 2, 3, 4, 7, 8, 9

Habitable area including laundry area	1673
Garage area (1 car)	213
Open balcony area	172
Covered patio area	103
<b>Total Area</b>	<b>2161</b>

### UNITS 5 and 6

Habitable area including laundry area	1990
Garage area (2 car)	433
Open balcony area	424
Open patio area	81
<b>Total Area</b>	<b>2928</b>

### Convenient Location

Mt. View is located in the center of everything on the Peninsula. Excellent educational opportunities abound in nearby colleges and universities. Mt. View's recreational parks and programs are among the best. For further information contact:

Mt. View Chamber of Commerce  
 P.O. Box 486  
 580 Castro Street  
 Mt. View, CA 94042  
 PHONE: 415-968-8378